

dashwood
studio

CLOUD forest
BY Sarah Knight





CLOUD forest
BY
Sarah Knight



“
CLOUD FOREST IS INSPIRED BY THE PRETTY,
DELICATE ANIMALS AND BOTANICALS OF THE
JUNGLE, USING A FRESH, BRIGHT PALLET OF
BLUES, PINKS AND CORAL.

I WAS DRAWN TO THE MORE PEACEFUL CALM
ANIMALS FOR THIS COLLECTION, THE GAZELLE,
ZEBRA, ELEPHANT TO EVOKE A SENSE OF
PEACE AND HARMONY. AS WITH MOST OF MY
WORK THIS COLLECTION IS FILLED WITH LOTS
OF SMALL HAND PAINTED DETAIL, INSPIRED BY
BEAUTIFUL INDIAN FLORAL ART.

~SARAH





MEET THE DESIGNER

SARAH KNIGHT

I'M SARAH, I MAKE LOTS OF PRETTY ART FROM MY HOME STUDIO IN MY LONDON APARTMENT, ALTHOUGH I DREAM OF A GARDEN BIG ENOUGH TO KEEP RESCUED PIGS. MY LITTLE WORK ROOM IS PACKED WITH PAINTS, PENCILS, PASTELS, PAPER, AND JUST ABOUT ANYTHING I COLLECT THROUGHOUT MY DAYS.

I LIKE TO PAINT AND DRAW WITH MIXED MEDIA, AND MAKE PAPERS AND TEXTURES FOR COLLAGE, ALTHOUGH I THINK WATERCOLOURS AND PENCILS ARE MY FAVOURITE!

I AM PROUDLY VEGAN, I LOVE ANIMALS AND NATURE, EMBROIDERY, REARRANGING MY SHELVES OF TRINKETS, AND VISITING ANIMAL SANCTUARIES.

I ADORE AUTUMN AND WINTER AND AM NEVER HAPPIER THAN WHEN WRAPPED UP IN LAYERS ON A CRISP MORNING.

SARAH'S INSTA

SARAH'S WEBSITE










PEG BAG BY @LAKESHANDCRAFTS



CLOUD2346

CLOUD2348

CLoUD2347



CLoUD2349



CLoUD2350



CLoUD2352



CLoUD2351



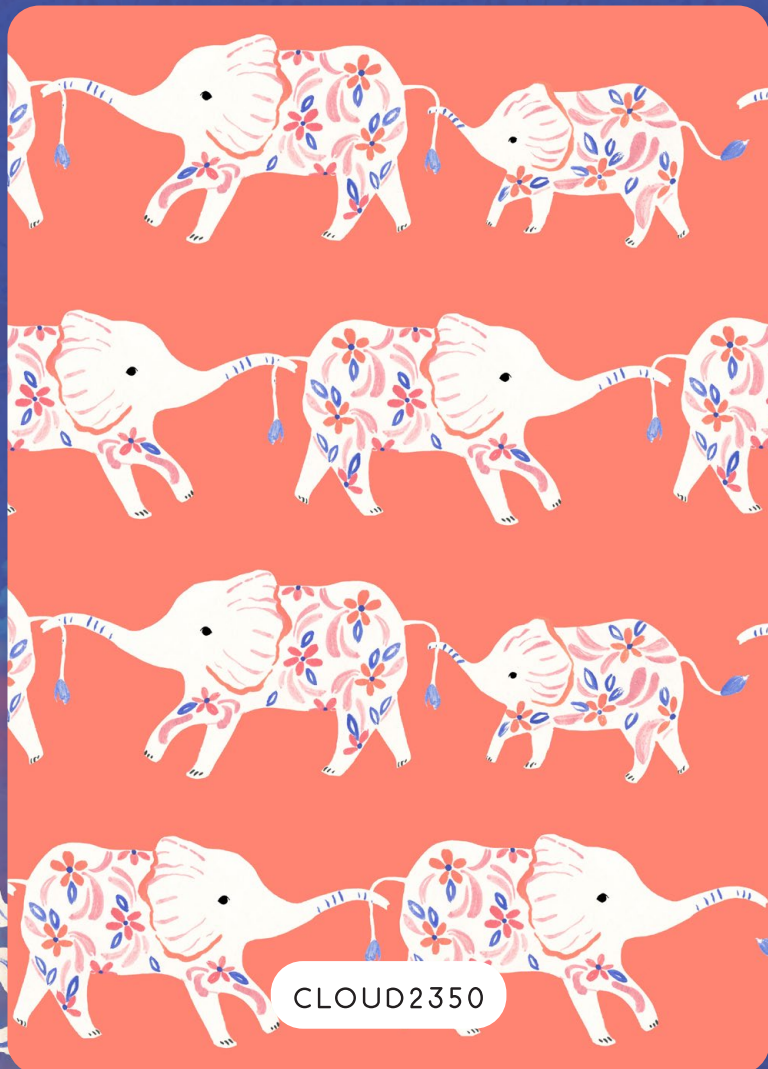
CLoUD2353



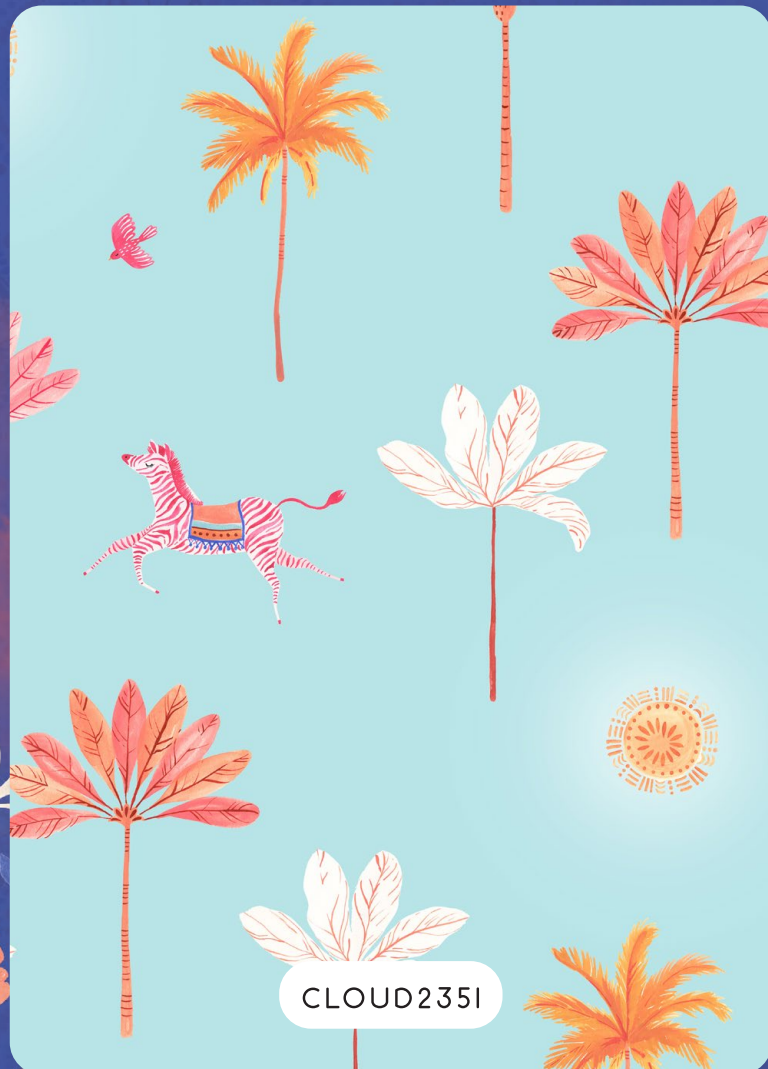
CLOUD2346



CLOUD2347



CLOUD2350



CLOUD2351



CLOUD2348



CLOUD2349



CLOUD2352



CLOUD2353





MINI TOTE BY @LAKESHANDCRAFTS



PAIR WITH POP

ROYAL

TIGERLILY

WATERMELON

PEACH

CAPRI

RUBY

SORBET

LAKE

OCEAN







PEG BAG & TOTE BY @LAKESHANDCRAFTS



dashwood
studio

CLOUD forest
BY Sarah Knight

